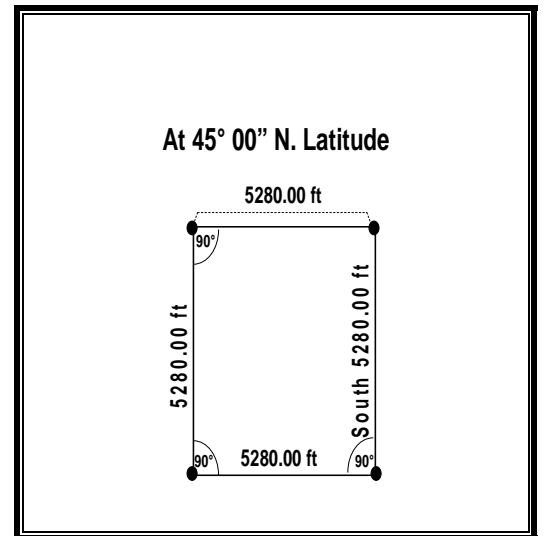


STANDARDS FOR INDIAN TRUST LANDS BOUNDARY EVIDENCE – PART 2

True Bearing of Each Line

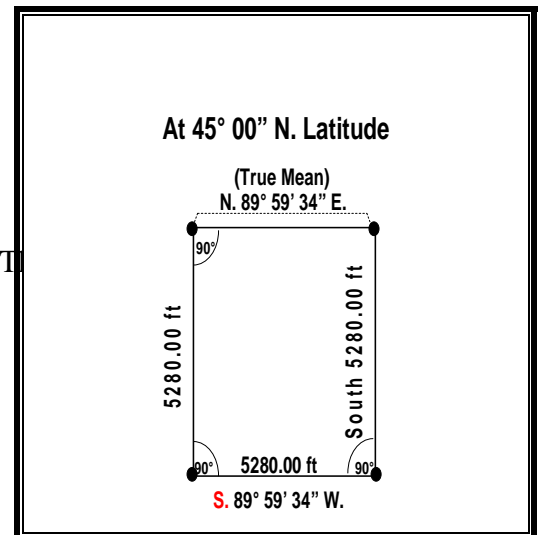
If we begin at a point and we survey then south, true south, this is a meridian, we turn at an exact 90-degree angle to another point we can see, I am saying line of site so we don't get into any difficulty about points in between or whatever, this is a line of site thing.



view.

We can see between these two, they are a mile apart and we turn a 90 degree angle, we turn another 90 degree angle and survey north 5,280 feet. We turn another 90- degree angle; well what is the distance of this line? 5,280 feet. No problem. We have surveyed a perfect square.

Its 5,280 feet but what is the true bearing of that line? The true bearing of that line is **North** 89 degrees 59 minutes 34 seconds east. This is the true mean bearing of that line. How did I get that?



Well, remember we had the 52 seconds that is how much curvature we have in that total mile at this latitude, at 45 degrees the meridians converge by 52 seconds, therefore the mean of this line is 26 seconds from cardinal. 89, 59, 34. Lets look at this a little further. That is the true mean, 89, 59, 34. The south boundary is also 89, 59, 34. That line is not west; it is **south** 89 degrees 59 minutes 34 seconds west. And we will look at that a little more in a minute.