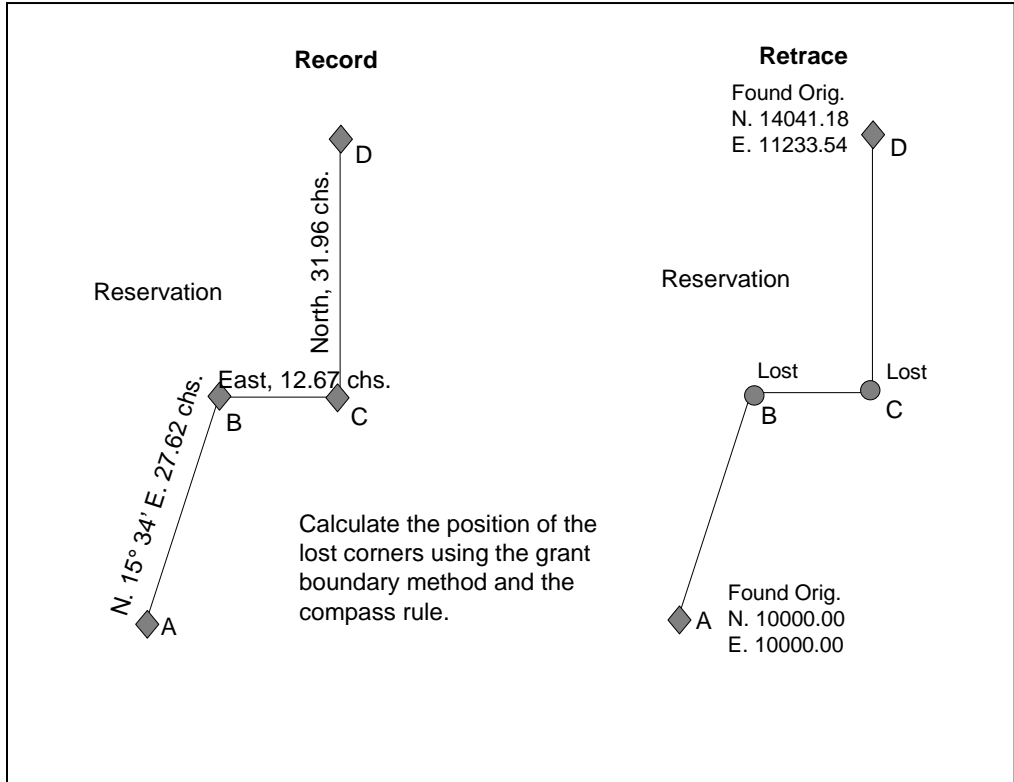


Grant Boundary and Compass Rule



$0.442353 \times N. 175.77 = N. 77.75$
 $0.442353 \times E. -91.88 = E. -40.64$

Record Lat and Dep. of each course plus correction

Course A-B: $N.1756.05 + 67.19 = N. 1823.24$
N. 13° 59' 06" E., 1878.93 ft.

$E. 489.20 - 35.12 = E. 454.08$

Course B-C: $N. 0.00 + 30.83 = N. 30.83$
N. 87° 50' 50" E., 820.69 ft.

$E. 836.22 - 16.11 = E. 820.11$

Course C-D: $N.2109.36 + 77.75 = N.2187.11$
N. 1° 03' 52" W., 2187.49 ft.

$E. 0.00 - 40.64 = E. -40.64$

Proportionate Position Corners B and C

Corner B: $N.10000.00 + 1823.24 \text{ ft.} = N.11823.24$

$E.10000.00 + 454.08 \text{ ft.} = E.10454.08$

Corner C: $N. 11823.24 + 30.83 \text{ ft.} = N. 11854.07$

$E.10454.08 + 820.11 \text{ ft.} = E.11274.19$

